

**Legend**

- Proposed Development Turbines (Indicative)
- Proposed Array Area and Export Cable Corridor
- 10km Radii
- 60km SLVIA Study Area
- Local Authority

**Cumulative Wind Farm Status**

- Operational
- Under Construction
- Consented
- Screening
- Scoping
- Viewpoint
- Wireline Only (90°HFOV)

**No. of Blade Tips Theoretically Visible**

- 1 - 30
- 31 - 60
- 61 - 90
- 91 - 120
- 121 - 150
- 151 - 179

Contains OS data © Crown copyright and database right (2022). © EMOdnet 2022, reproduced under the CC-BY-SA 4.0 license. Contains public sector information licensed under the Open Government Licence v3.0. © EMOdnet 2022, reproduced under the CC-BY-SA 4.0 license.

Project Name  
**BERWICK BANK WIND FARM**

Drawing Title  
**Figure 15.44a  
Viewpoint A: Dunnottar Castle**

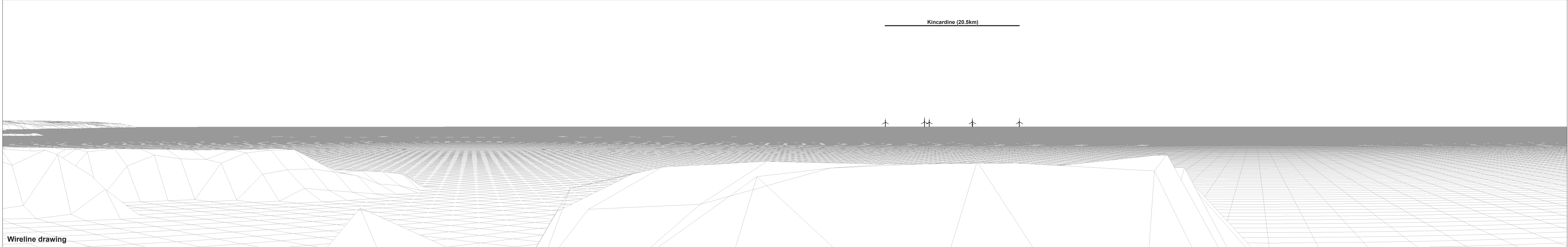
Rev	Date	Details	Status	Drwn	Rqst	Chkd	Appd
R1	26/01/2022	First Issue	-	SH	-	SM	-
R2	27/07/2022	Second Issue	-	SH	-	SM	-
R3	29/09/2022	Third Issue	-	SH	-	SM	-
R4	-	-	-	-	-	-	-

Drawing Number

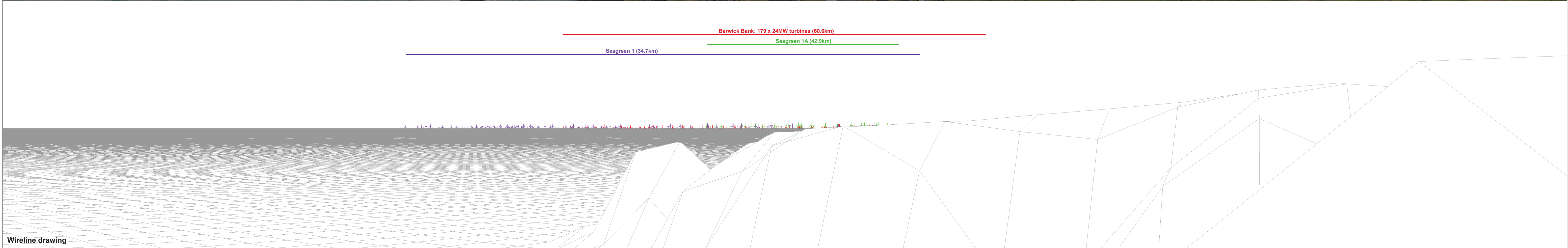
Scale: 1:600,000 Plot Size: Extended A3 Datum: WGS84 Projection: UTM30N

open optimised environments PART OF SLR

sse Renewables

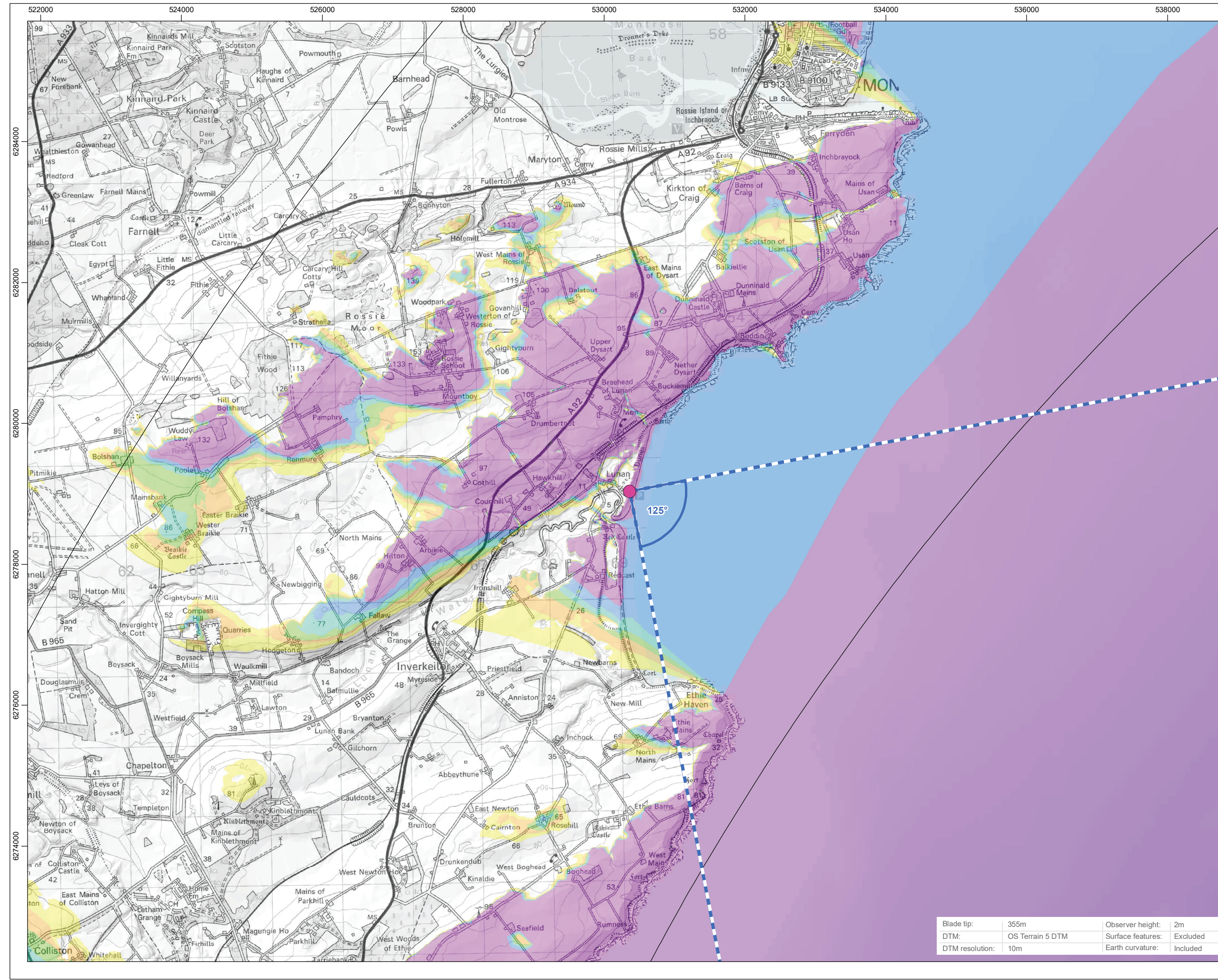
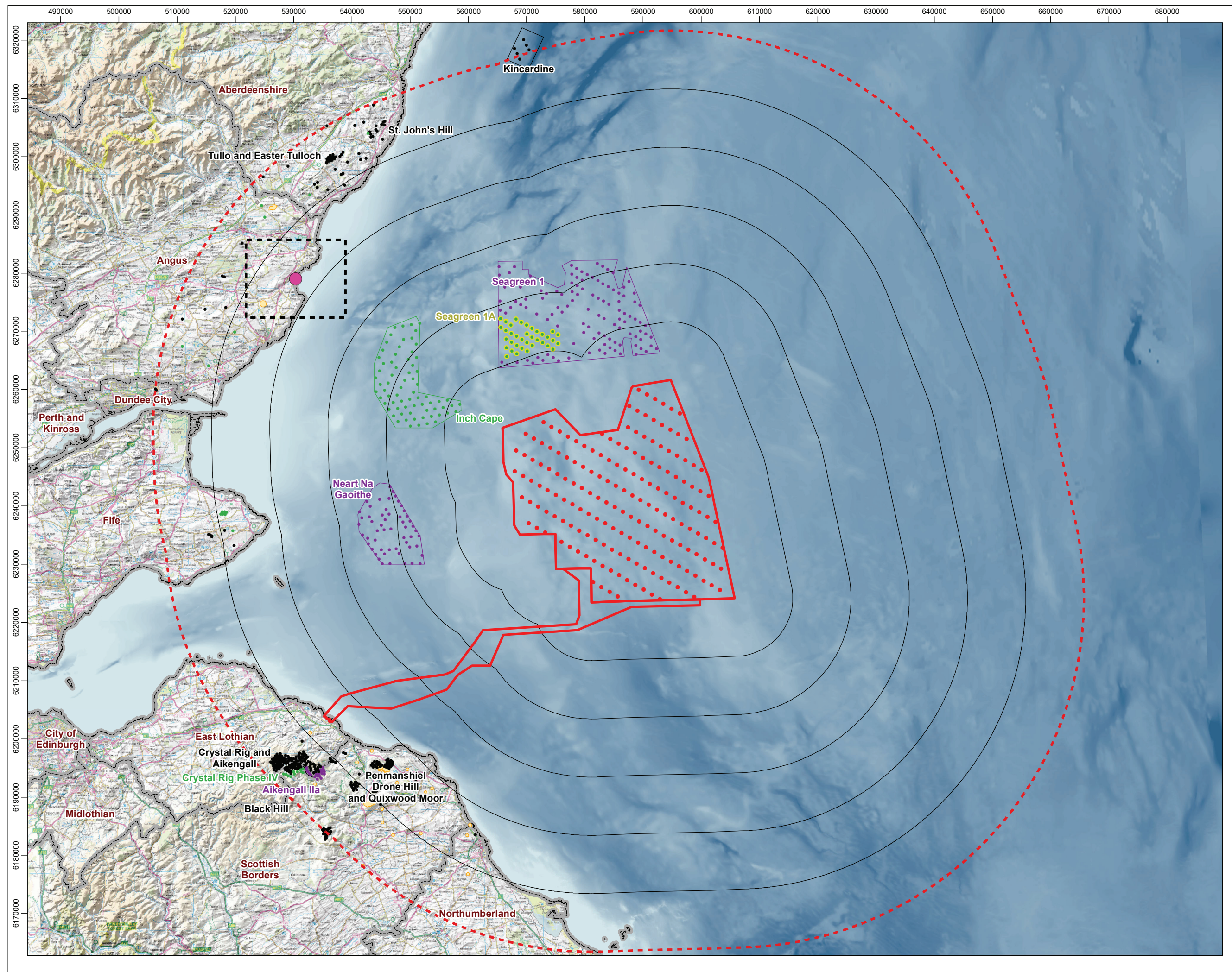


<b>OS reference:</b> 387941 E 783806 N	<b>Horizontal field of view:</b> 90° (cylindrical projection)	<b>Camera:</b> Canon EOS 6D	↑ Proposed Development Turbines
<b>Eye level:</b> 50.45 mAOB	<b>Principal distance:</b> 522 mm	<b>Lens:</b> Canon EF 50mm f/1.4	↑ Operational Turbines
<b>Direction of view:</b> 63°	<b>Paper size:</b> 841 x 297 mm (half A1)	<b>Camera height:</b> 1.5 m	↑ Under Construction Turbines
<b>Dist. to Array Area:</b> 60.56km	<b>Correct printed image size:</b> 820 x 130 mm	<b>Date and time:</b> 16/11/2021 16:02	↑ Consented Turbines



<b>OS reference:</b> 387941 E 783806 N <b>Eye level:</b> 50.45 mAOD <b>Direction of view:</b> 153° <b>Dist. to Array Area:</b> 60.56km	<b>Horizontal field of view:</b> 90° (cylindrical projection) <b>Principal distance:</b> 522 mm <b>Paper size:</b> 841 x 297 mm (half A1) <b>Correct printed image size:</b> 820 x 130 mm	<b>Camera:</b> Canon EOS 6D <b>Lens:</b> Canon EF 50mm f/1.4 <b>Camera height:</b> 1.5 m <b>Date and time:</b> 16/11/2021 16:02	<ul style="list-style-type: none"> <li>↑ Proposed Development Turbines</li> <li>↑ Operational Turbines</li> <li>↑ Under Construction Turbines</li> <li>↑ Consented Turbines</li> </ul>	<b>Note:</b> Under construction Seagreen 1 and Neart Na Gaoithe wind farms have been added (photomontaged) in to the baseline panorama.	<b>Figure: 15.44c</b> <b>Viewpoint A: Dunnottar Castle</b> <b>Berwick Bank Wind Farm</b> <small>© Crown copyright, All rights reserved (2021). Licence number 0100031673</small>
---	--	--	--	---	---





**Legend**

- Proposed Development Turbines (Indicative)
- ▭ Proposed Array Area and Export Cable Corridor
- 10km Radii
- ⋯ 60km SLVIA Study Area
- ▭ Local Authority

**Cumulative Wind Farm Status**

- Operational
- Under Construction
- Consented
- Screening
- Scoping
- Viewpoint
- Wireline Only (90°HFOV)

**No. of Blade Tips Theoretically Visible**

- 1 - 30
- 31 - 60
- 61 - 90
- 91 - 120
- 121 - 150
- 151 - 179

Contains OS data © Crown copyright and database right (2022). © EMOData 2022, reproduced under the CC-BY-SA 4.0 license. Contains public sector information licensed under the Open Government Licence v3.0. © EMOData 2022, reproduced under the CC-BY-SA 4.0 license.

Project Name  
**BERWICK BANK WIND FARM**

Drawing Title  
**Figure 15.45a  
Viewpoint B: Lunan Bay**

Rev	Date	Details	Status	Drwn	Rqst	Chkd	Appd
R1	26/01/2022	First Issue	-	SH	-	SM	-
R2	27/07/2022	Second Issue	-	SH	-	SM	-
R3	29/09/2022	Third Issue	-	SH	-	SM	-
R4	-	-	-	-	-	-	-

Drawing Number

Scale	1:600,000	Plot Size	Extended A3	Datum	WGS84	Projection	UTM30N
-------	-----------	-----------	-------------	-------	-------	------------	--------

Blade tip: 355m  
 Observer height: 2m  
 DTM: OS Terrain 5 DTM  
 Surface features: Excluded  
 DTM resolution: 10m  
 Earth curvature: Included

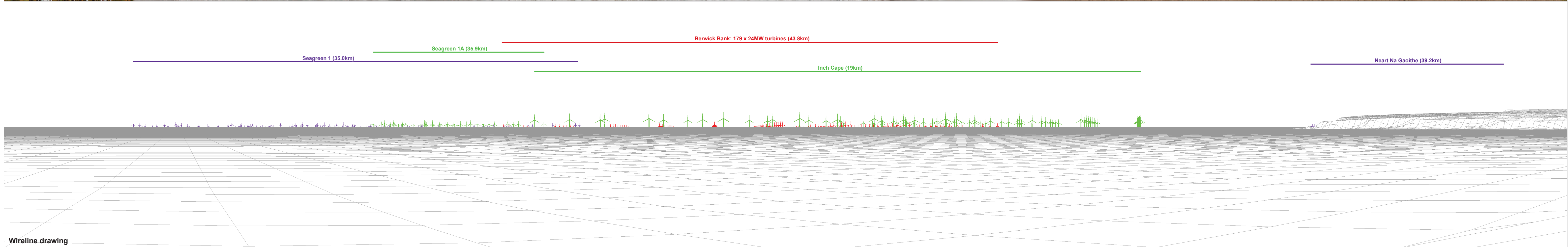
open  
optimised environments  
PART OF SLR

sse  
Renewables



Baseline photograph

This image provides landscape and visual context only



Wireline drawing

OS reference: 369156 E 751526 N  
 Eye level: 11.54 mAOD  
 Direction of view: 125°  
 Dist. to Array Area: 43.79km

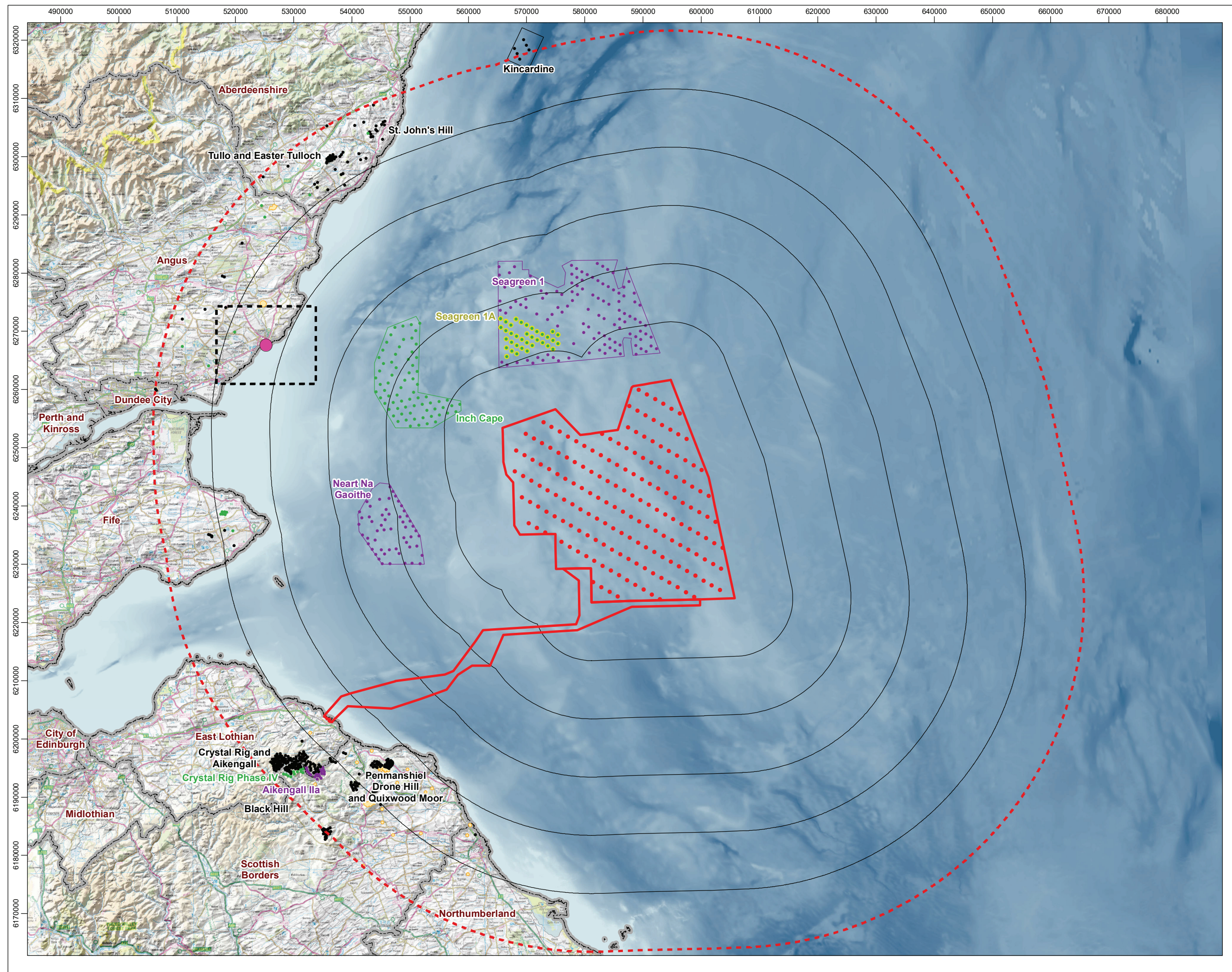
Horizontal field of view: 90° (cylindrical projection)  
 Principal distance: 522 mm  
 Paper size: 841 x 297 mm (half A1)  
 Correct printed image size: 820 x 130 mm

Camera: Canon EOS 6D  
 Lens: Canon EF 50mm f/1.4  
 Camera height: 1.5 m  
 Date and time: 16/11/2021 12:58

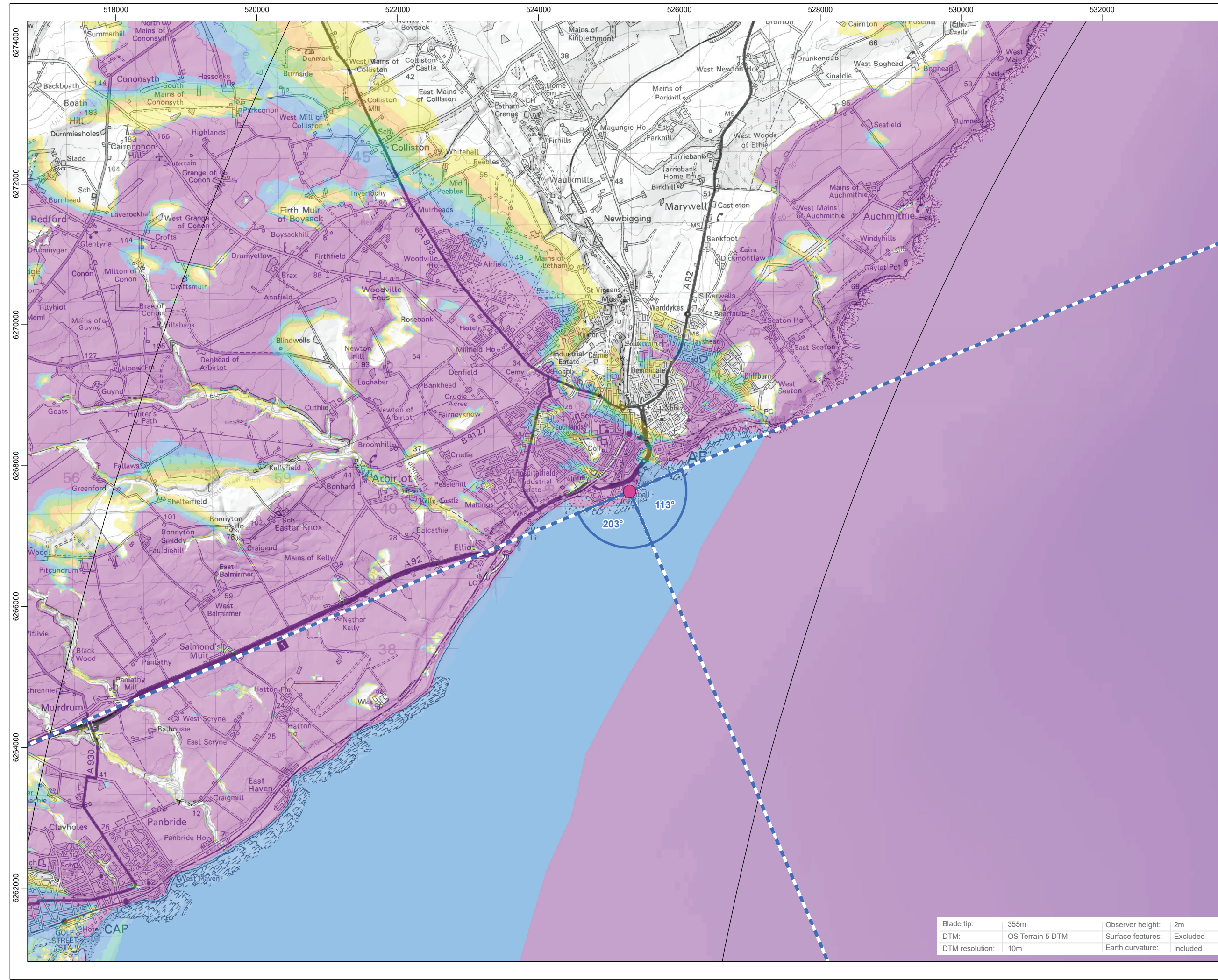
- ↑ Proposed Development Turbines
- ↑ Operational Turbines
- ↑ Under Construction Turbines
- ↑ Consented Turbines

**Note:** Under construction Seagreen 1 and Neart Na Gaoithe wind farms have been added (photomontaged) in to the baseline panorama.

**Figure: 15.45b**  
 Viewpoint B: Lunan Bay  
 Berwick Bank Wind Farm  
© Crown copyright. All rights reserved (2021). Licence number 0100031673



Scale: 1:620,000



Scale: 1:50,000



**Legend**

- Proposed Development Turbines (Indicative)
- Proposed Array Area and Export Cable Corridor
- 10km Radii
- 60km SLVIA Study Area
- Local Authority

**Cumulative Wind Farm Status**

- Operational
- Under Construction
- Consented
- Screening
- Scoping
- Viewpoint

**Wireline Only (90°HFOV)**

**No. of Blade Tips Theoretically Visible**

- 1 - 30
- 31 - 60
- 61 - 90
- 91 - 120
- 121 - 150
- 151 - 179

Contains OS data © Crown copyright and database right (2022). © EMOdnet 2022, reproduced under the CC-BY-SA 4.0 license. Contains public sector information licensed under the Open Government Licence v3.0. © EMOdnet 2022, reproduced under the CC-BY-SA 4.0 license.

Project Name  
**BERWICK BANK WIND FARM**

Drawing Title  
**Figure 15.46a  
Viewpoint C: Arbroath**

Rev	Date	Details	Status	Drwn	Rqst	Chkd	Appd
R1	26/01/2022	First Issue	-	SH	-	SM	-
R2	27/07/2022	Second Issue	-	SH	-	SM	-
R3	29/09/2022	Third Issue	-	SH	-	SM	-
R4	-	-	-	-	-	-	-

Drawing Number

Scale: 1:600,000 | Plot Size: Extended A3 | Datum: WGS84 | Projection: UTM30N

open  
optimised environments

PART OF SLR

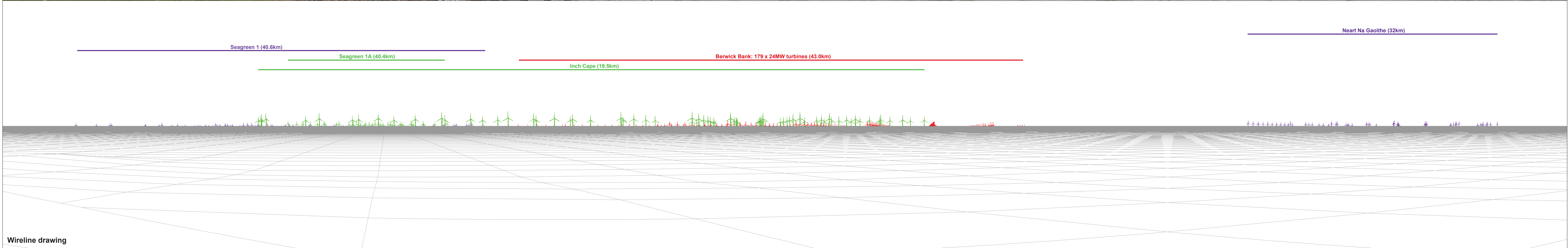
sse  
Renewables

Blade tip:	355m	Observer height:	2m
DTM:	OS Terrain 5 DTM	Surface features:	Excluded
DTM resolution:	10m	Earth curvature:	Included



Baseline photograph

This image provides landscape and visual context only



Wireline drawing

OS reference: 363921 E 740199 N  
 Eye level: 7.34 mAOD  
 Direction of view: 113°  
 Dist. to Array Area: 43.01km

Horizontal field of view: 90° (cylindrical projection)  
 Principal distance: 522 mm  
 Paper size: 841 x 297 mm (half A1)  
 Correct printed image size: 820 x 130 mm

Camera: Canon EOS 6D  
 Lens: Canon EF 50mm f/1.4  
 Camera height: 1.5 m  
 Date and time: 16/11/2021 12:15

- ↑ Proposed Development Turbines
- ↑ Operational Turbines
- ↑ Under Construction Turbines
- ↑ Consented Turbines

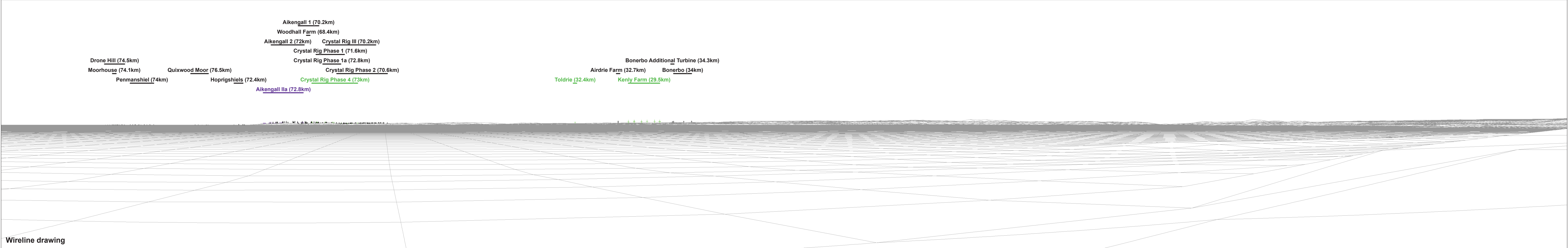
**Note:** Under construction Seagreen 1 and Neart Na Gaoithe wind farms have been added (photomontaged) in to the baseline panorama.





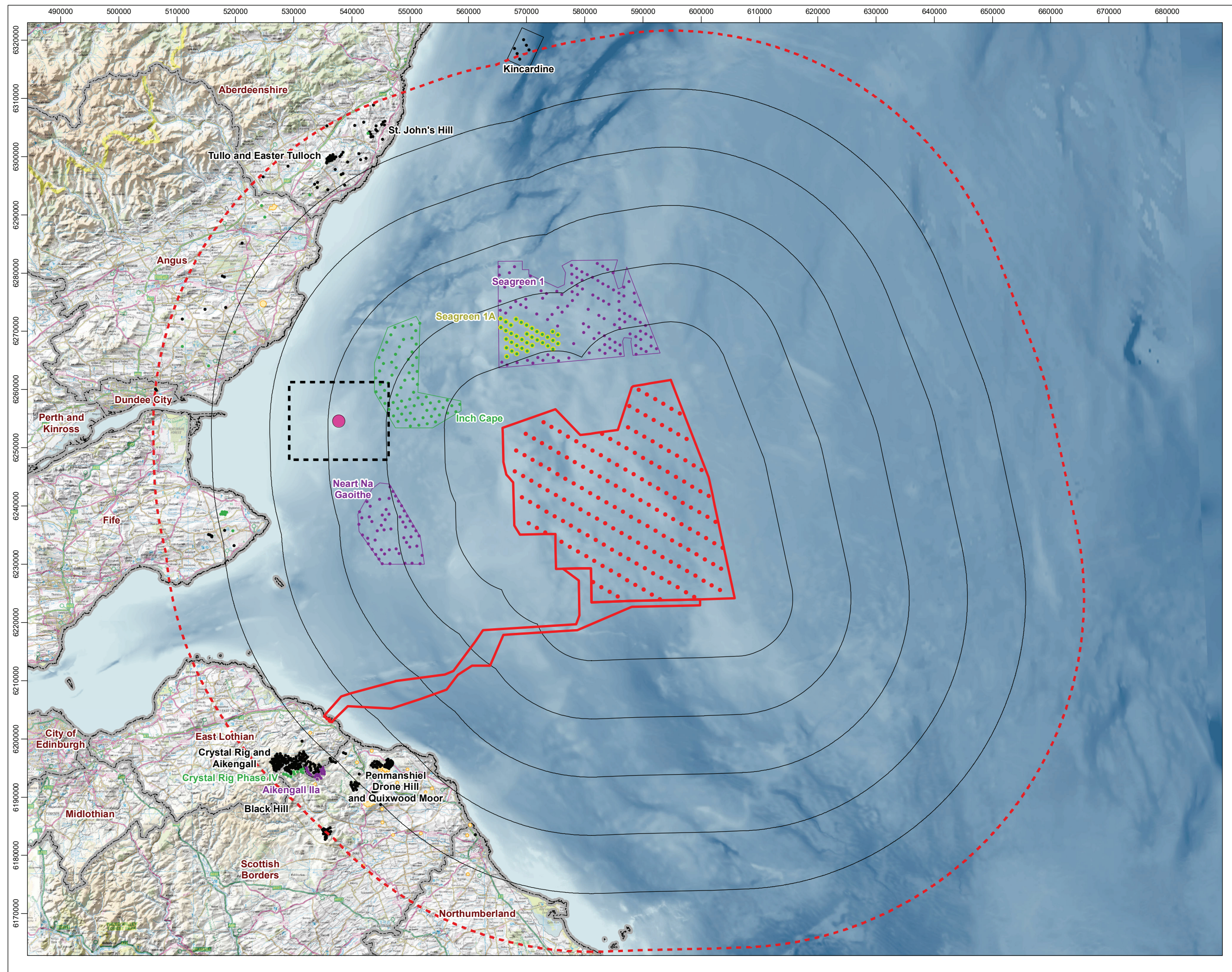
Baseline photograph

This image provides landscape and visual context only

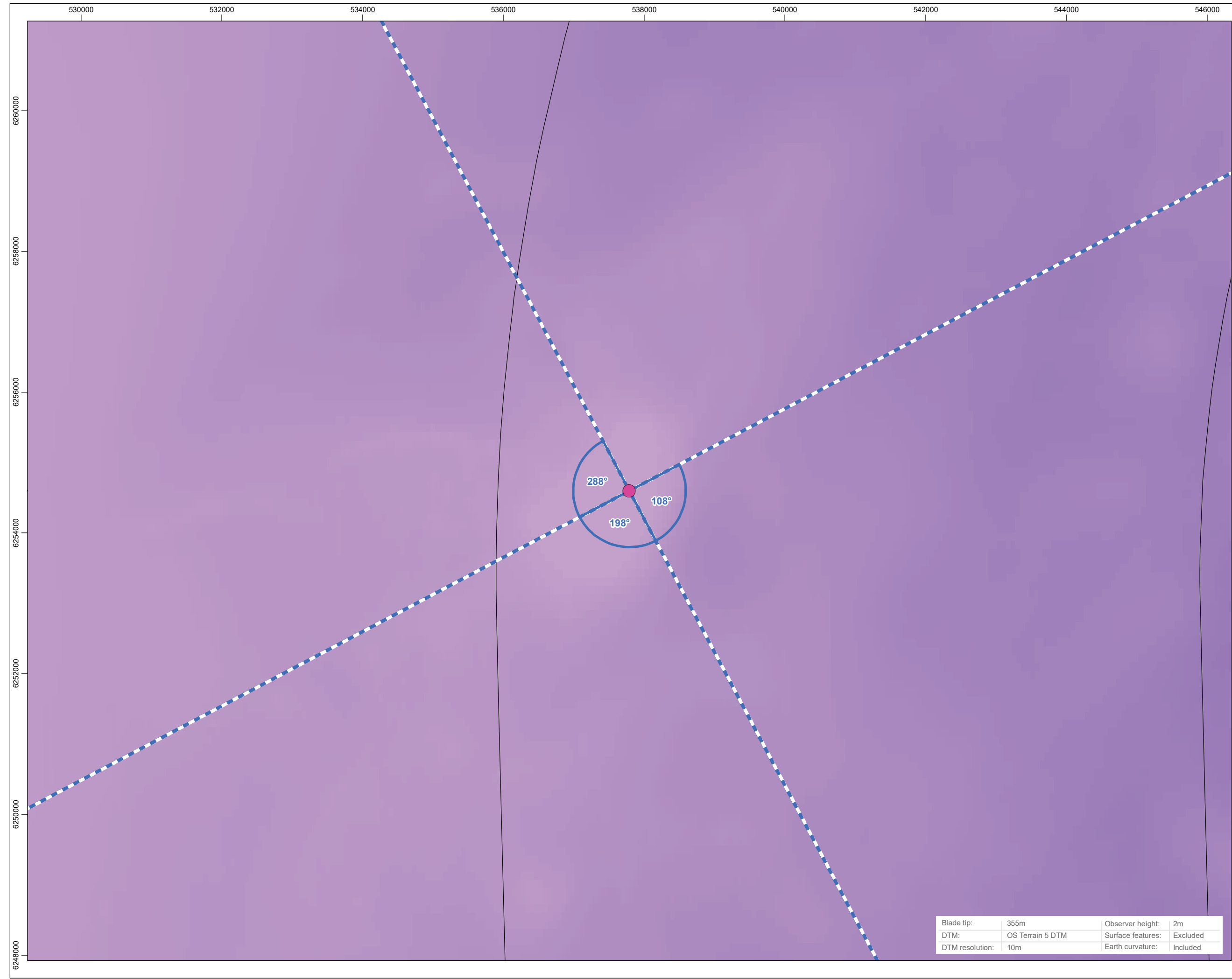


Wireline drawing





Scale: 1:620,000



Scale: 1:50,000



**Legend**

- Proposed Development Turbines (Indicative)
- Proposed Array Area and Export Cable Corridor
- 10km Radii
- 60km SLVIA Study Area
- Local Authority

**Cumulative Wind Farm Status**

- Operational
- Under Construction
- Consented
- Screening
- Scoping
- Viewpoint

**Wireline Only (90°HFOV)**

**No. of Blade Tips Theoretically Visible**

- 151 - 179



Contains OS data © Crown copyright and database right (2022). © EMOdnet 2022, reproduced under the CC-BY-SA 4.0 licence. Contains public sector information licensed under the Open Government Licence v3.0. © EMOdnet 2022, reproduced under the CC-BY-SA 4.0 licence.

Project Name  
**BERWICK BANK WIND FARM**

Drawing Title  
**Figure 15.47a  
Viewpoint D: Bell Rock Lighthouse**

Rev	Date	Details	Status	Drwn	Rqst	Chkd	Appd
R1	26/01/2022	First Issue	-	SH	-	SM	-
R2	27/07/2022	Second Issue	-	SH	-	SM	-
R3	29/09/2022	Third Issue	-	SH	-	SM	-
R4	-	-	-	-	-	-	-

Drawing Number

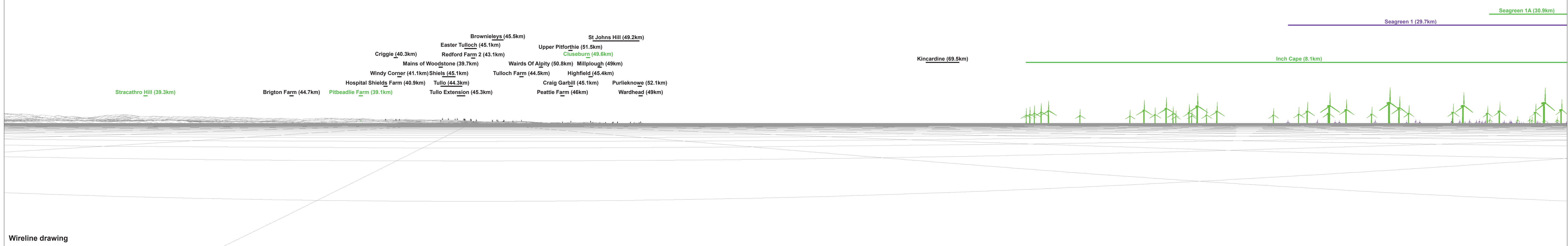
Scale	Plot Size	Datum	Projection
1:600,000	Extended A3	WGS84	UTM30N



NO PHOTOGRAPH AVAILABLE

Baseline photograph

This image provides landscape and visual context only



Wireline drawing

OS reference: 376223 E 726981 N  
 Eye level: 1.5 mAOD  
 Direction of view: 18°  
 Dist. to Array Area: 28.13km

Horizontal field of view: 90° (cylindrical projection)  
 Principal distance: 522 mm  
 Paper size: 841 x 297 mm (half A1)  
 Correct printed image size: 820 x 130 mm

Camera: Canon EOS 6D  
 Lens: Canon EF 50mm f/1.4  
 Camera height: 1.5 m

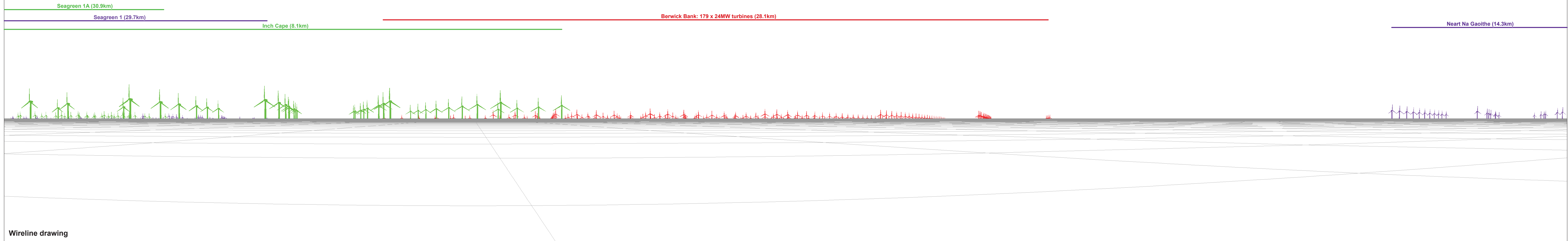
↑ Proposed Development Turbines  
 ↑ Operational Turbines  
 ↑ Under Construction Turbines  
 ↑ Consented Turbines

Figure: 15.47b  
 Viewpoint D: Bell Rock Lighthouse  
 Berwick Bank Wind Farm  
 © Crown copyright. All rights reserved (2021). Licence number 0100031673

NO PHOTOGRAPH AVAILABLE

Baseline photograph

This image provides landscape and visual context only



Wireline drawing

OS reference: 376223 E 726981 N  
Eye level: 1.5 mAOD  
Direction of view: 108°  
Dist. to Array Area: 28.13km

Horizontal field of view: 90° (cylindrical projection)  
Principal distance: 522 mm  
Paper size: 841 x 297 mm (half A1)  
Correct printed image size: 820 x 130 mm

Camera: Canon EOS 6D  
Lens: Canon EF 50mm f/1.4  
Camera height: 1.5 m  
Date and time:

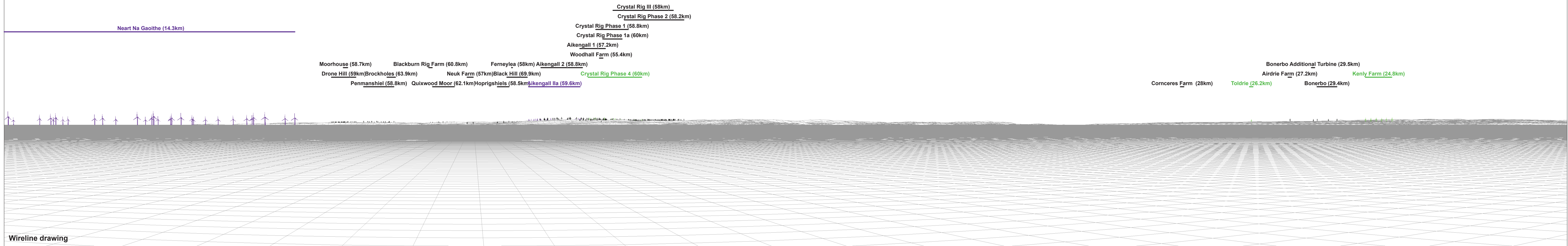
- Proposed Development Turbines
- Operational Turbines
- Under Construction Turbines
- Consented Turbines

Figure: 15.47c  
Viewpoint D: Bell Rock Lighthouse  
Berwick Bank Wind Farm  
© Crown copyright. All rights reserved (2021). Licence number 0100031673

NO PHOTOGRAPH AVAILABLE

Baseline photograph

This image provides landscape and visual context only



Wireline drawing

OS reference: 376223 E 726981 N  
 Eye level: 1.5 mAOD  
 Direction of view: 198°  
 Dist. to Array Area: 28.13km

Horizontal field of view: 90° (cylindrical projection)  
 Principal distance: 522 mm  
 Paper size: 841 x 297 mm (half A1)  
 Correct printed image size: 820 x 130 mm

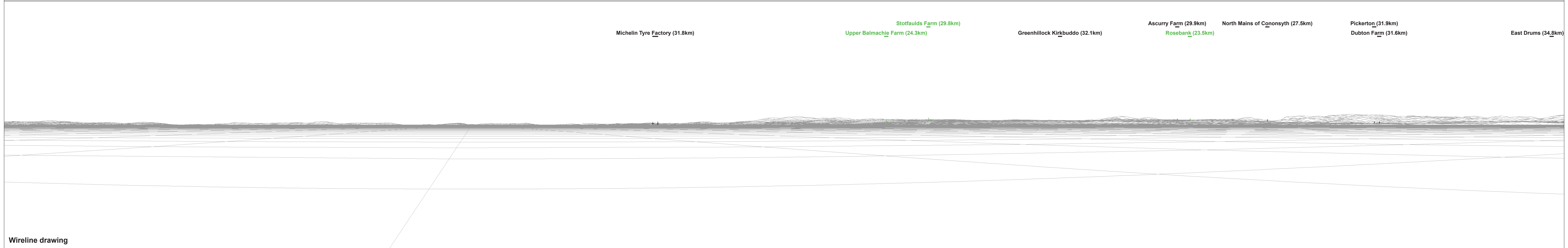
Camera: Canon EOS 6D  
 Lens: Canon EF 50mm f/1.4  
 Camera height: 1.5 m

- ↑ Proposed Development Turbines
- ↑ Operational Turbines
- ↑ Under Construction Turbines
- ↑ Consented Turbines

NO PHOTOGRAPH AVAILABLE

Baseline photograph

This image provides landscape and visual context only



Wireline drawing

OS reference: 376223 E 726981 N  
Eye level: 1.5 mAOD  
Direction of view: 288°  
Dist. to Array Area: 28.13km

Horizontal field of view: 90° (cylindrical projection)  
Principal distance: 522 mm  
Paper size: 841 x 297 mm (half A1)  
Correct printed image size: 820 x 130 mm

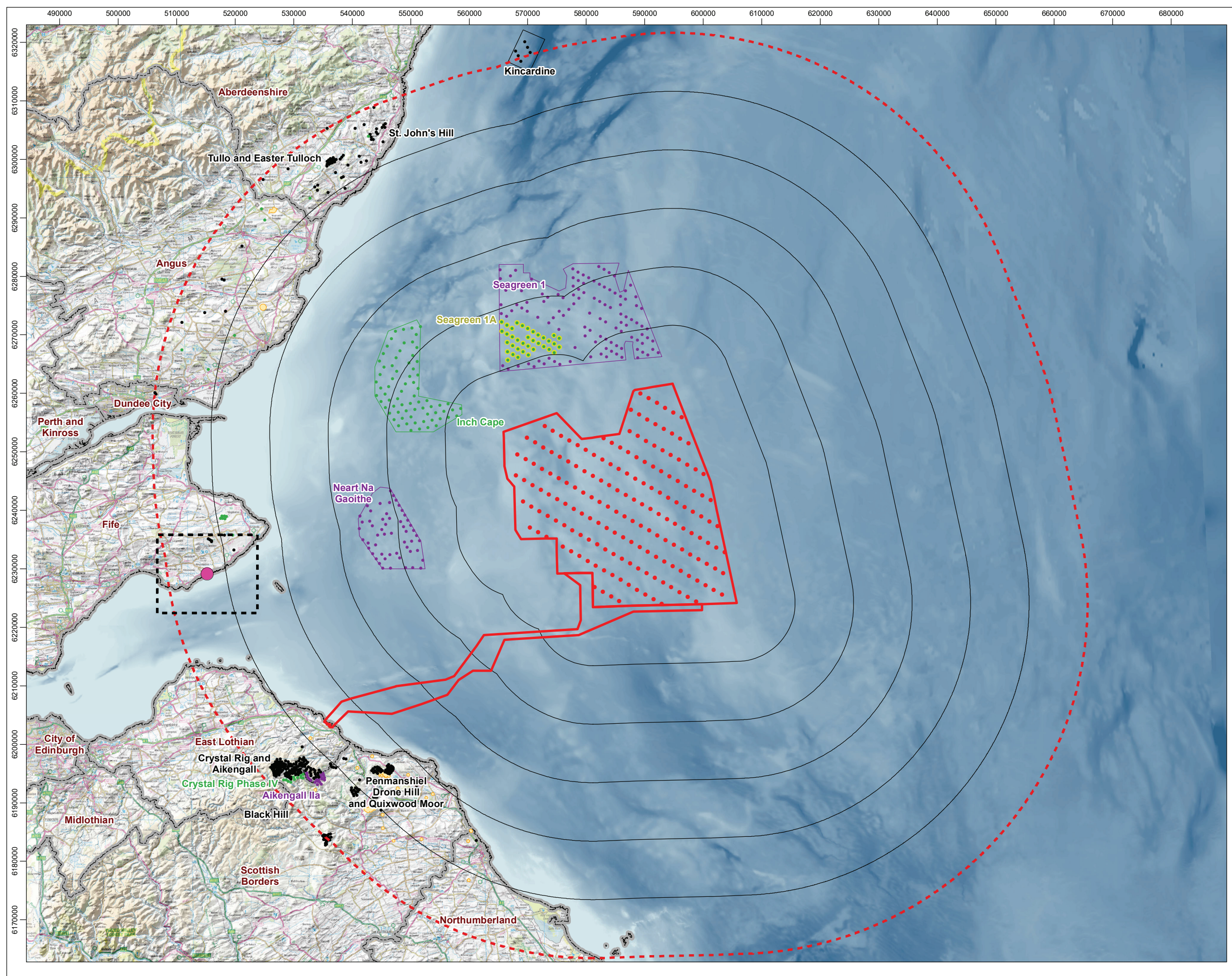
Camera: Canon EOS 6D  
Lens: Canon EF 50mm f/1.4  
Camera height: 1.5 m

↑ Proposed Development Turbines  
↑ Operational Turbines  
↑ Under Construction Turbines  
↑ Consented Turbines

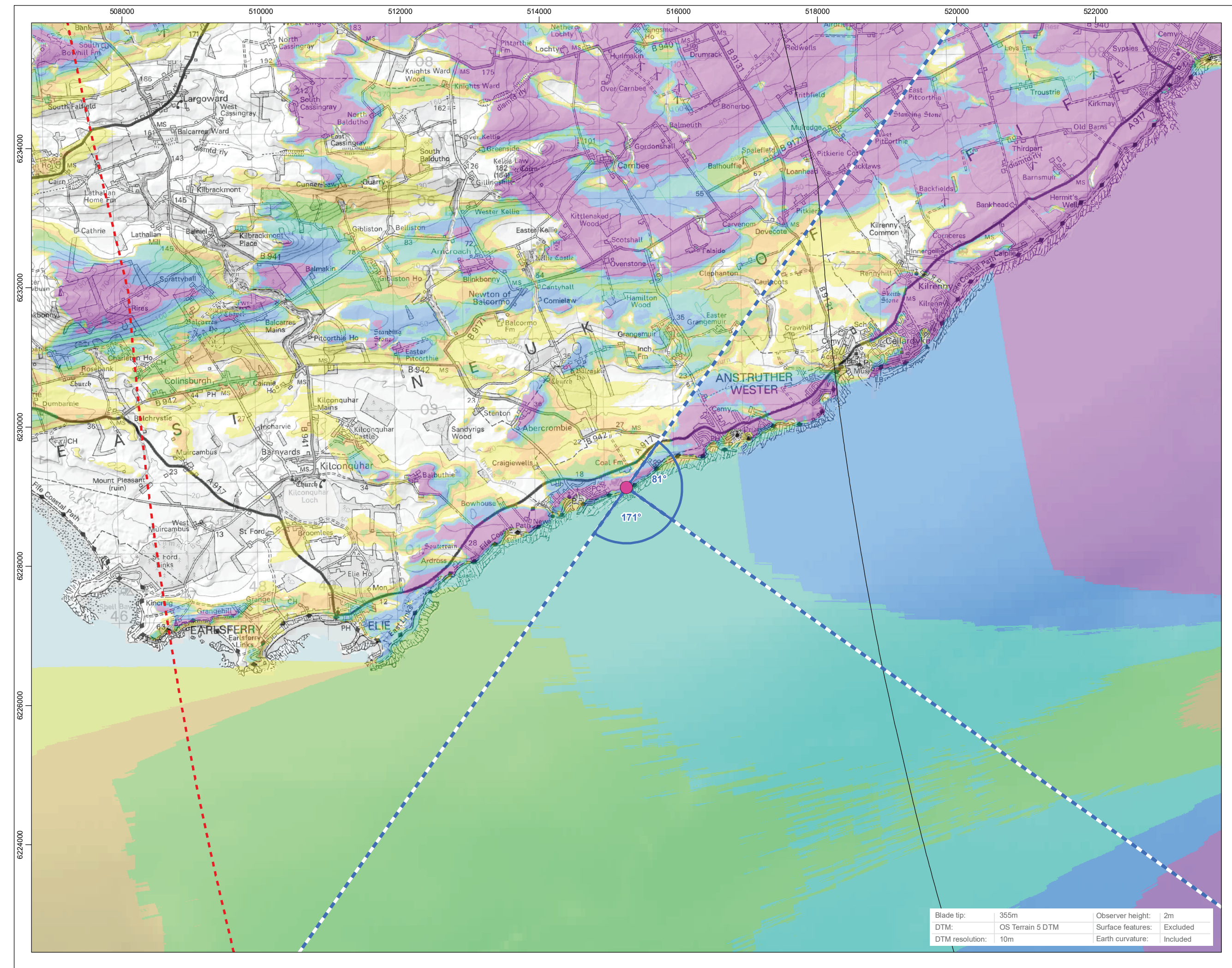
Figure: 15.47e  
Viewpoint D: Bell Rock Lighthouse  
Berwick Bank Wind Farm  
© Crown copyright. All rights reserved (2021). Licence number 0100031673







Scale: 1:620,000



Scale: 1:50,000

**Legend**

- Proposed Development Turbines (Indicative)
- ▭ Proposed Array Area and Export Cable Corridor
- 10km Radii
- 60km SLVIA Study Area
- ▭ Local Authority

**Cumulative Wind Farm Status**

- Operational
- Under Construction
- Consented
- Screening
- Scoping
- Viewpoint
- ▭ Wireline Only (90°HFOV)

**No. of Blade Tips Theoretically Visible**

- 1 - 30
- 31 - 60
- 61 - 90
- 91 - 120
- 121 - 150
- 151 - 179

Contains OS data © Crown copyright and database right (2022). © EMODnet 2022, reproduced under the CC-BY-SA 4.0 licence. Contains public sector information licensed under the Open Government Licence v3.0. © EMODnet 2022, reproduced under the CC-BY-SA 4.0 licence.

**Project Name**  
BERWICK BANK WIND FARM

**Drawing Title**  
Figure 15.48a  
Viewpoint E: St Monan's

Rev	Date	Details	Status	Drwn	Rqst	Chkd	Appd
R1	26/01/2022	First Issue	-	SH	-	SM	-
R2	27/07/2022	Second Issue	-	SH	-	SM	-
R3	29/09/2022	Third Issue	-	SH	-	SM	-
R4	-	-	-	-	-	-	-

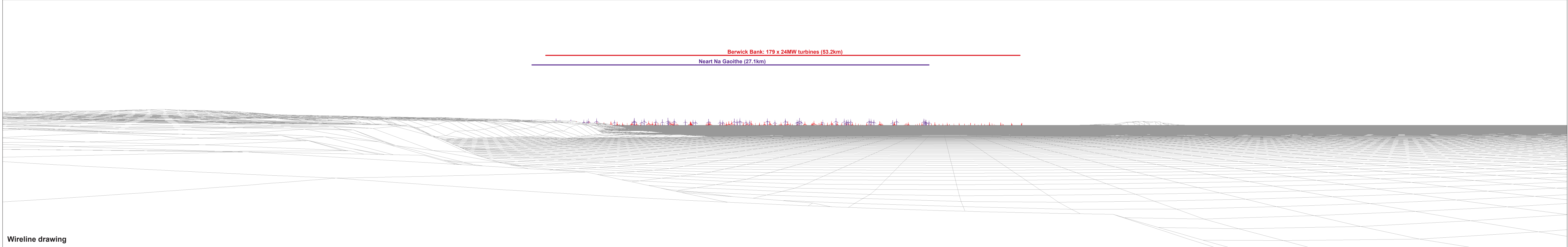
**Drawing Number**

Scale	Plot Size	Datum	Projection
1:600,000	Extended A3	WGS84	UTM30N

**open**  
optimised environments  
PART OF SLR

**sse**  
Renewables

Blade tip:	355m	Observer height:	2m
DTM:	OS Terrain 5 DTM	Surface features:	Excluded
DTM resolution:	10m	Earth curvature:	Included



<p><b>OS reference:</b> 353317 E 701844 N</p> <p><b>Eye level:</b> 16.26 mAOD</p> <p><b>Direction of view:</b> 81°</p> <p><b>Dist. to Array Area:</b> 53.18km</p>	<p><b>Horizontal field of view:</b> 90° (cylindrical projection)</p> <p><b>Principal distance:</b> 522 mm</p> <p><b>Paper size:</b> 841 x 297 mm (half A1)</p> <p><b>Correct printed image size:</b> 820 x 130 mm</p>	<p><b>Camera:</b> Canon EOS 6D</p> <p><b>Lens:</b> Canon EF 50mm f/1.4</p> <p><b>Camera height:</b> 1.5 m</p> <p><b>Date and time:</b> 11/11/2021 12:21</p>	<p>↑ Proposed Development Turbines</p> <p>↑ Operational Turbines</p> <p>↑ Under Construction Turbines</p> <p>↑ Consented Turbines</p>	<p><b>Note:</b> Under construction Seagreen 1 and Nearth Na Gaoithe wind farms have been added (photomontaged) in to the baseline panorama.</p>	<p><b>Figure: 15.48b</b></p> <p><b>Viewpoint E: St Monan's</b></p> <p><b>Berwick Bank Wind Farm</b></p> <p><small>© Crown copyright. All rights reserved (2021). Licence number 0100031673</small></p>
---	---	---	---	---	--

